

L-Series engines

Isuzu Motors America, Inc.



Description

The Isuzu 4L-Series is an incredibly durable industrial diesel engine and employs many of the advantages of larger engines, such as 8L and above. Features including a closed crankcase vent system, gear driven timing train, uniting pumps, and direct injection keep this model clean, quiet, and efficient.

- 4-cylinder, 4-cycle, water-cooled, OHV, vertical in-line, indirect & direct injection
- Tier 2 Certified
- 12-Volt electrics standard, 24-Volt optional
- 5-Year/5000-Hour warranty
- 1-Year/1800-Hour export warranty (available in select markets)
- Isuzu-designed accessory kits available

Features

High Output, Low Fuel Consumption & Low Emission

- 4L-Series IDI and DI 2.2L
- Re-entrant type combustion chamber new line independent injection pumps

Light Weight & Compact Size

- Full Siamese cylinder block
- Integrated speed governor
- Short length
- Uniting pumps
- Modular intake manifold/valve cover

Low Noise

- Small module helical gear
- Tuned intake system (air)
- Curved gear case
- Structured block

High Reliability, Durability & Flexibility

- Gear-driven timing train
- Thermatic piston
- Steel laminate cylinder head gasket
- Fewer moving parts
- Low maintenance cost
- Side maintenance – right hand side
- Variety of dipstick heights
- Optional oil fill locations

Your Professional Partner
www.isuzuengines.com

ISUZU
DIESEL

Technical Information

Engine Model	4LE1PV-01	4LE1PV-02	4LE1PV-03	4LE1PV-04	4LE1PV-05
kW/hp @ rpm	25kW @ 1800	25kW @ 1800	25kW @ 1800	25kW @ 1800	25kW @ 1800
Engine Displacement	2.2 Liter	2.2 Liter	2.2 Liter	2.2 Liter	2.2 Liter
Number of Cylinders	4	4	4	4	4
Aspiration	Natural	Natural	Natural	Natural	Natural
Flywheel Housing	SAE #4	SAE #5	SAE #5	SAE #5	SAE #5
Gear Case PTO	Not Applicable	Not Applicable	Not Applicable	Not Applicable	Not Applicable
Dry Weight	397 lbs.	348 lbs.	351 lbs.	408 lbs.	348 lbs.
Dimensions (mm) (LxWxH)	724 x 491 x 635.5	673 x 475 x 635.5	637 x 456 x 608.5	643 x 464 x 621	656 x 491 x 589.5

Engine Model	4LE2PV-01	4LE2PV-03	4LE2PW-10	4LE2PW-11	4LE2PW-12
kW/hp @ rpm	25kW @ 1800	25kW @ 1800	52hp @ 3000	52hp @ 3000	52hp @ 3000
Engine Displacement	2.2 Liter	2.2 Liter	2.2 Liter	2.2 Liter	2.2 Liter
Number of Cylinders	4	4	4	4	4
Aspiration	Natural	Natural	Natural	Natural	Natural
Flywheel Housing	SAE #5	SAE #5	SAE #4	Flat Rear Plate	SAE #4
Gear Case PTO	Not Applicable	Not Applicable	Not Applicable	Not Applicable	SAE "A" PAD
Dry Weight	342 lbs.	344 lbs.	363 lbs.	299 lbs.	367 lbs.
Dimensions (mm) (LxWxH)	666 x 491 x 602.2	657 x 488 x 602.2	753 x 488 x 602	654 x 488 x 602	753 x 498 x 602

Engine Model	4LE2PW-13	4LE2PW-15
kW/hp @ rpm	52hp @ 3000	52hp @ 3000
Engine Displacement	2.2 Liter	2.2 Liter
Number of Cylinders	4	4
Aspiration	Natural	Natural
Flywheel Housing	SAE #5	SAE #5
Gear Case PTO	SAE "A" PAD	Not Applicable
Dry Weight	337 lbs.	331 lbs.
Dimensions (mm) (LxWxH)	695.3 x 498 x 602	695.3 x 488 x 602

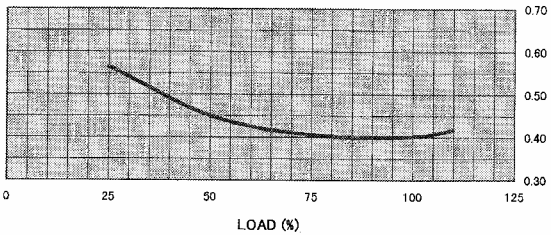
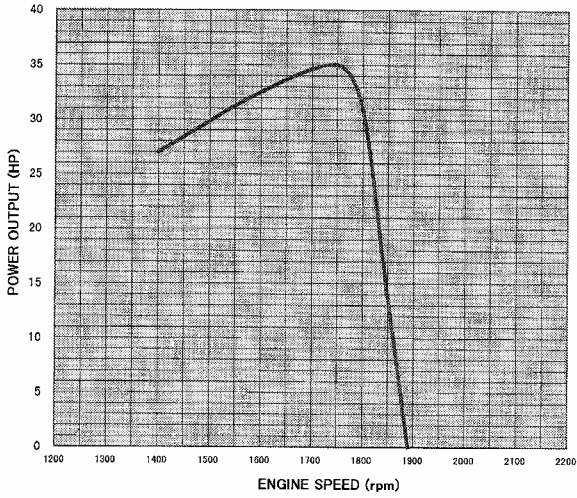


Isuzu Motors America, Inc. PowerTrain Division

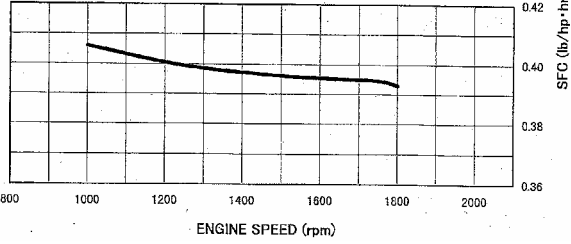
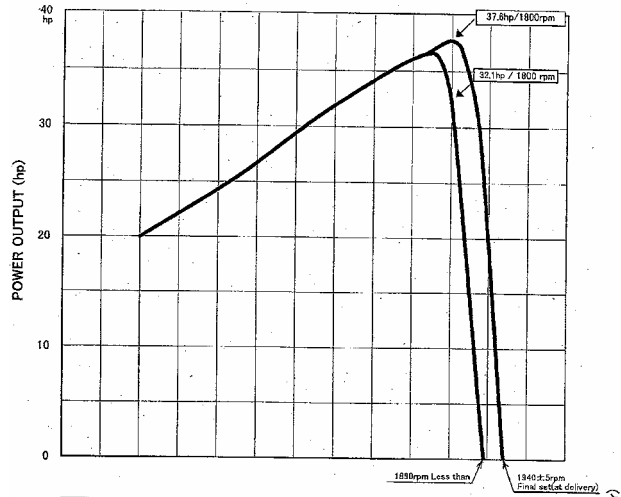
46401 Commerce Center Drive ■ Plymouth, MI 48170
Phone: 734.582.9470 ■ Fax: 734.455.7581

Performance Curves

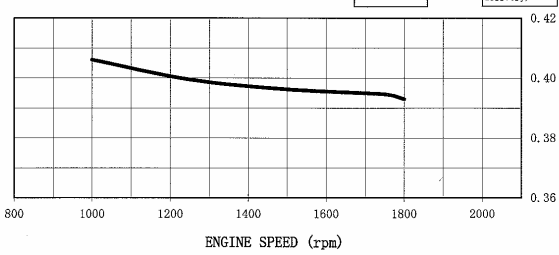
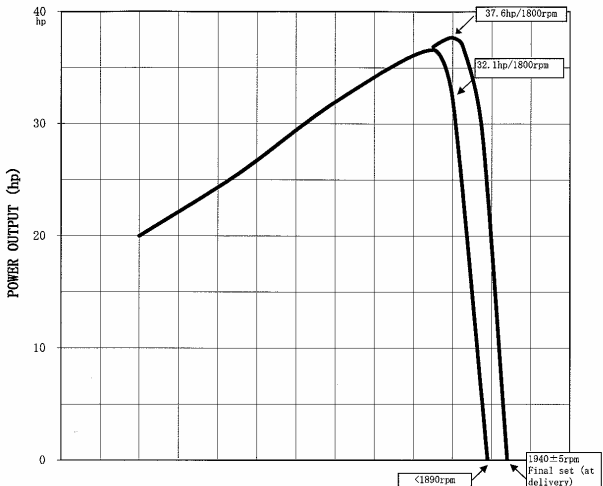
4LE1PV Standard Curve



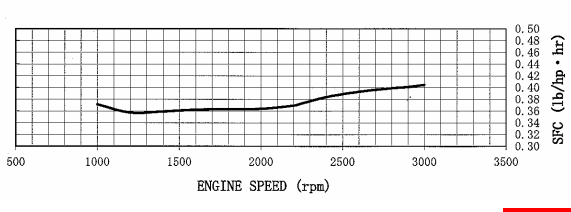
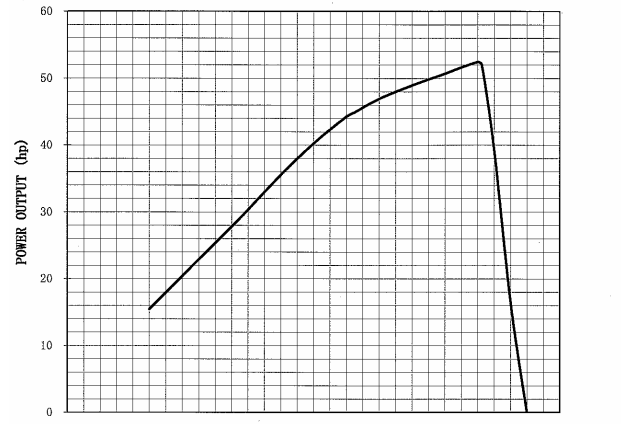
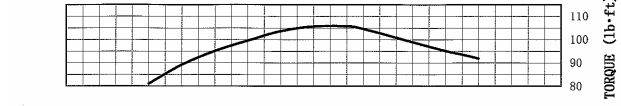
4LE2PV-01 Curve



4LE2PV-03 Curve



4LE2PW Standard Curve



Curves are SAE J1995 Gross BHP unless otherwise specified. Specifications subject to change without notice.

Your Professional Partner
www.isuzuengines.com





Copyright © 2005 by Isuzu Motors America, Inc.

Isuzu Motors America, Inc.
PowerTrain Division

46401 Commerce Center Drive ■ Plymouth, MI 48170
Phone: 734.582.9470 ■ Fax: 734.455.7581

Your Professional Partner
www.isuzuengines.com

ISUZU
DIESEL